

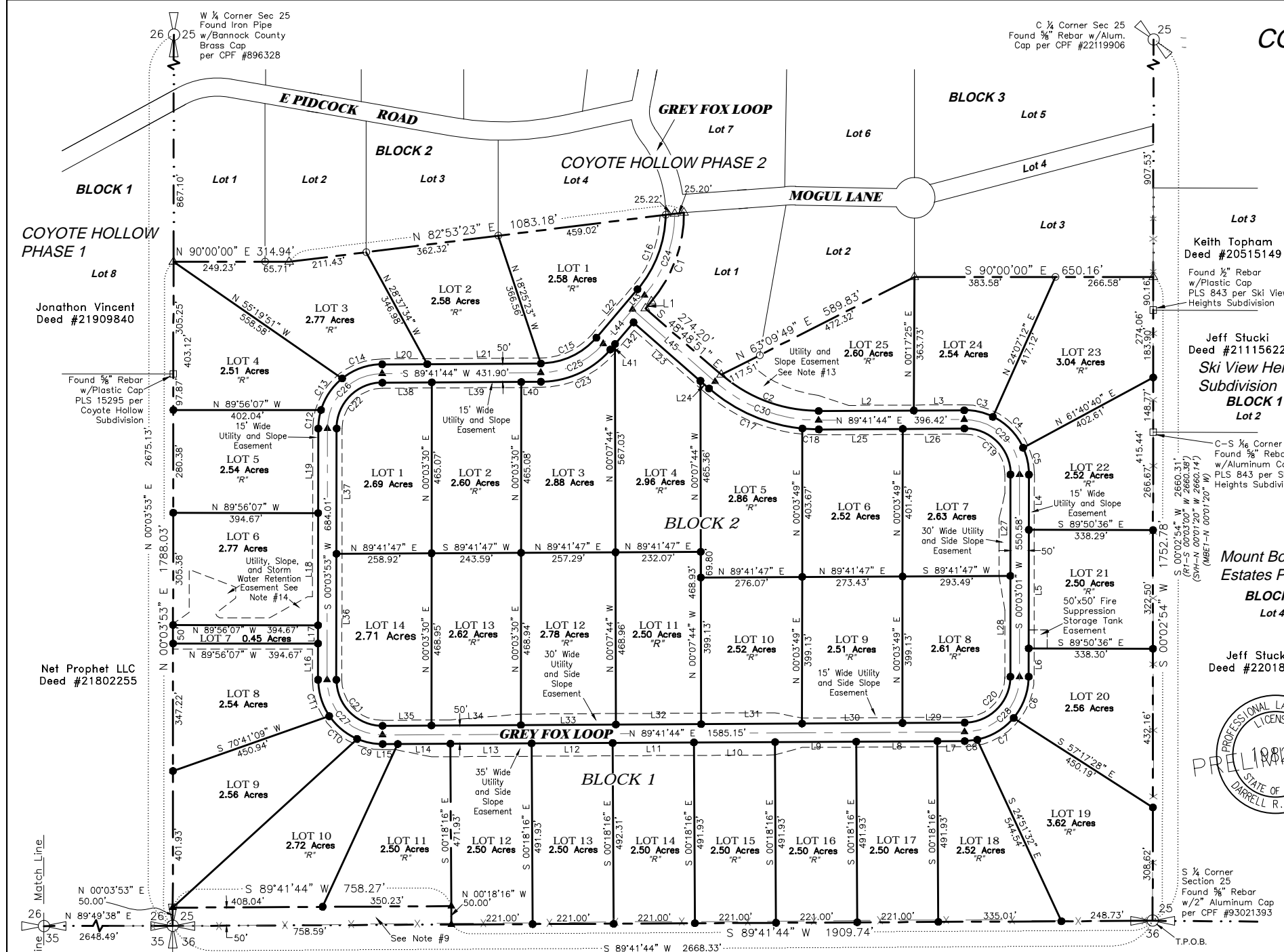
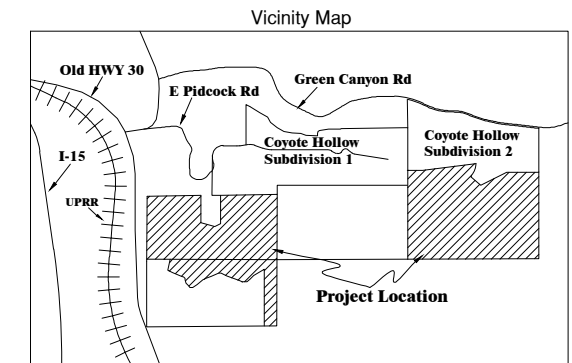
# COYOTE HOLLOW SUBDIVISION PHASE 3

LOCATED IN SECTIONS 25, 26, AND 35  
TOWNSHIP 7 SOUTH, RANGE 36 EAST, OF THE  
BOISE MERIDIAN IN THE COUNTY OF BANNOCK.



### LEGEND

- Parcel Boundary
  - Lot Lines
  - Section Line
  - Adjoining Parcels
  - Easements
  - Fence Lines
  - Center Line
- Set 1/2" Rebar with Plastic Cap PLS 19825
  - ▲ Set 5/8" Rebar with Aluminum Cap PLS 19825
  - Found 1/2" Rebar with Plastic Cap PLS 19825 per Coyote Hollow 2
  - △ Found 5/8" Rebar with Aluminum Cap PLS 19825 per Coyote Hollow 2
  - Found Monument as Noted
  - "R" Parcels marked with an "R" are restricted due to Open Space and/or Steep Slopes. Development of these parcels shall comply with the current Bannock County Ordinances.
  - (R1-) Record Bearing and Distance per ROS Instr. #21507138
  - (SVH-) Record Bearing and Distance per Ski View Heights Subdivision #20514621
  - (MBE1-) Record Bearing and Distance per Mount Bonneville Estates 1 #20708317



**Monumented Basis of Bearing**  
Basis of bearing per Idaho State Plane Coordinate System - East Zone. GPS observation combination factor: 1.0002930163.  
Lawrence Nestor Deed #99005134

CURVE	ARC LENGTH	RADIUS	CHORD LENGTH	CHORD BEARING	DELTA ANGLE	CURVE	ARC LENGTH	RADIUS	CHORD LENGTH	CHORD BEARING	DELTA ANGLE
C1	262.72'	370.00'	257.24'	S 20°06'16" W	40°41'00"	C16	221.19'	320.00'	216.81'	N 20°38'41" E	39°38'11"
C2	289.45'	400.00'	283.18'	S 69°34'26" E	41°27'41"	C17	281.17'	450.00'	276.62'	S 66°42'54" E	35°48'01"
C3	80.33'	175.00'	79.63'	N 77°09'16" E	26°18'03"	C18	44.68'	450.00'	44.67'	S 87°21'35" E	6°41'29"
C4	120.28'	175.00'	117.92'	N 44°18'52" W	39°22'43"	C19	197.12'	125.00'	177.32'	N 45°07'37" W	90°21'18"
C5	75.37'	175.00'	74.79'	N 12°17'14" W	24°40'32"	C20	195.58'	125.00'	176.23'	N 44°52'23" E	89°38'42"
C6	121.80'	175.00'	119.36'	N 19°59'22" E	39°52'42"	C21	197.16'	125.00'	177.35'	S 45°07'12" E	90°22'10"
C7	117.60'	175.00'	115.40'	N 59°10'47" E	38°30'06"	C22	195.54'	125.00'	176.21'	S 44°52'48" W	89°37'50"
C8	34.41'	175.00'	34.35'	N 84°03'47" E	11°15'54"	C23	214.89'	250.00'	208.34'	N 65°04'15" E	49°14'57"
C9	71.48'	175.00'	70.98'	S 78°36'12" E	23°24'09"	C24	241.96'	345.00'	237.03'	S 20°21'17" W	40°10'58"
C10	99.25'	175.00'	97.92'	S 50°39'17" E	32°29'39"	C25	193.40'	225.00'	183.50'	S 65°04'15" W	49°14'57"
C11	106.29'	175.00'	103.71'	S 17°10'17" E	34°28'21"	C26	234.65'	225.00'	211.45'	S 44°52'48" W	89°37'50"
C12	51.00'	175.00'	50.82'	S 08°24'50" W	16°41'54"	C27	236.59'	150.00'	212.81'	S 45°07'12" E	90°22'10"
C13	105.06'	175.00'	103.49'	S 33°57'44" W	34°23'52"	C28	234.69'	150.00'	211.47'	N 44°52'23" E	89°38'42"
C14	117.70'	175.00'	115.49'	S 70°25'42" W	38°32'04"	C29	236.55'	150.00'	212.79'	N 45°07'37" W	90°21'18"
C15	171.91'	200.00'	166.67'	N 65°04'15" E	49°14'57"	C30	307.76'	425.00'	301.08'	S 69°33'35" E	41°29'23"

LINE	BEARING	DISTANCE	LINE	BEARING	DISTANCE
L1	S 40°26'46" W	25.36'	L24	S 48°48'54" E	31.39'
L2	N 89°41'44" E	259.09'	L25	N 89°41'44" E	228.80'
L3	N 89°41'44" E	137.34'	L26	N 89°41'44" E	167.62'
L4	S 00°03'01" W	150.43'	L27	S 00°03'01" W	275.68'
L5	S 00°03'01" W	322.50'	L28	S 00°03'01" W	274.90'
L6	S 00°03'01" W	77.65'	L29	S 89°41'44" W	169.35'
L7	S 89°41'44" W	74.54'	L30	S 89°41'44" W	273.43'
L8	S 89°41'44" W	221.00'	L31	S 89°41'44" W	274.73'
L9	S 89°41'44" W	221.00'	L32	S 89°41'19" W	232.07'
L10	S 89°41'44" W	221.00'	L33	S 89°42'05" W	258.82'
L11	S 89°41'44" W	221.00'	L34	S 89°41'44" W	243.59'
L12	S 89°41'44" W	221.00'	L35	S 89°41'44" W	133.17'
L13	S 89°41'44" W	221.00'	L36	N 00°03'53" E	343.14'
L14	S 89°41'44" W	143.16'	L37	N 00°03'53" E	340.87'
L15	S 89°41'44" W	41.45'	L38	N 89°41'44" E	134.67'
L16	N 00°03'53" E	98.54'	L39	N 89°41'44" E	243.59'
L17	N 00°03'53" E	50.00'	L40	N 89°41'44" E	53.64'
L18	N 00°03'53" E	305.38'	L41	N 40°26'46" E	20.00'
L19	N 00°03'53" E	230.10'	L42	N 40°26'46" E	77.38'
L20	N 89°41'44" E	122.76'	L43	S 40°26'46" W	50.04'
L21	N 89°41'44" E	309.14'	L44	S 40°26'46" W	122.70'
L22	N 40°26'46" E	172.74'	L45	N 48°48'54" W	298.68'
L23	S 48°48'54" E	241.96'			

**DIOPTRA**  
A Company of Geomatics Professionals  
4880 Clover Dell, Chubbuck, ID. 83202 Ph:208-237-7373  
www.dioptrageomatics.com

**Coyote Hollow Subdivision Phase 3**

Drawn By: DRH      Scale: 1"=200'  
Date: 10/10/21      Project: 21035

Sheet: 1 of 3